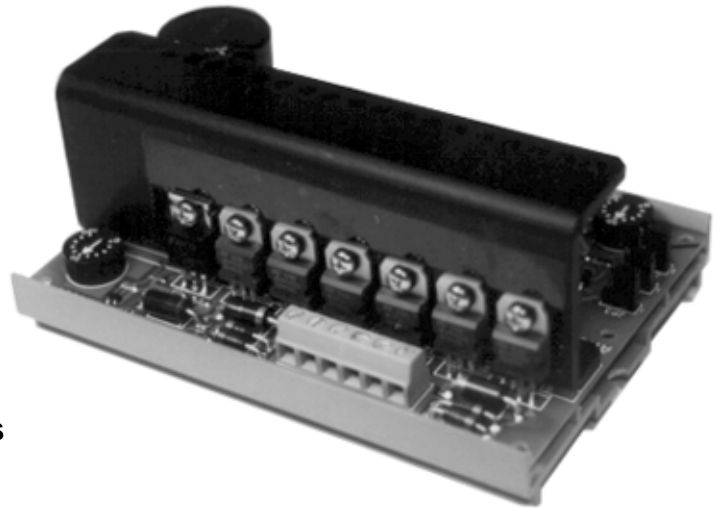


# PRODUCT RELEASE

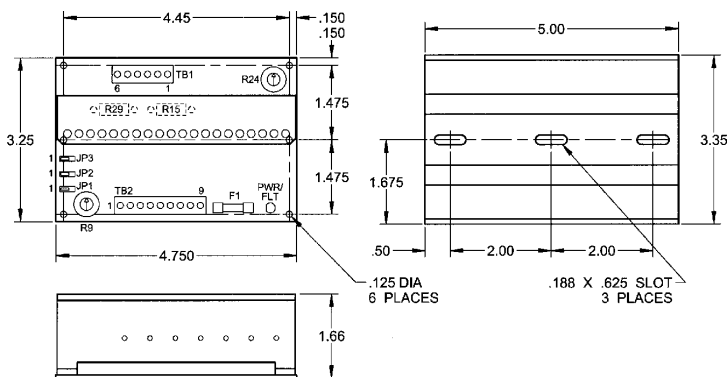
## TM4000 Track Mount Driver

- 1.0-4.5 Amperes/Phase Operating Current
- Higher Torque/Speed Output
- Short Circuit Protection
- Open Motor Wire Detection
- No RFI or EMI Problems
- Requires 7-28 VAC or 10-40 VDC
- TTL-CMOS Compatible Inputs
- Receives Positive or Negative Going Clocks
- Full Step or Half Step Operation
- Motor Turn Off Provisions
- Open Frame Circuit Board Mounts on Snaptrack

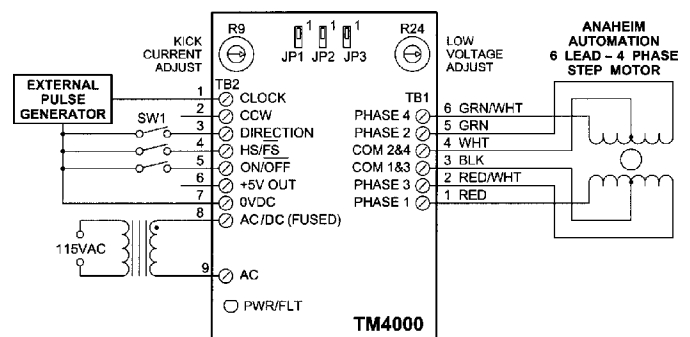


The TM4000 driver is a low cost, unipolar step motor driver designed for 4-phase step motors. The TM4000 is a track mount driver, meaning that it can be quickly mounted on easy to use snaptrack. The TM4000 allows the option of using full-step or half-step operation, giving the user the ability to step in either 1.8° or 0.9° increments. The driver can be powered by an AC or DC voltage. For AC operation, the driver may be purchased with a recommended step down transformer. A single transformer may be used to power up several drivers based on power consumption. A major advantage that the TM4000 has over chopper drivers, is that the TM4000 is designed to use bi-level technology. This means that it has replaced the need for high frequency switching techniques, consequently it does not create the EMI, RFI, and motor heating problems that are associated with chopper drivers. This technique makes the TM4000 suitable for applications where low noise requirements are a must. It is especially useful for medical equipment, test instruments, positioning systems, and any other application where noise may be a problem.

### Dimensions:



### Hook Up Diagram:



**ANAHEIM AUTOMATION**

910 East Orangefair Lane, Anaheim, CA 92801  
e-mail: info@anaheimautomation.com

(714) 992-6990 fax: (714) 992-0471  
website: www.anaheimautomation.com